



HILARY
RHODA
WHERE BEAUTY BEGINS





For confident and
strong women

ABOUT US

WHERE BEAUTY BEGINS

The Hilary Rhoda journey started in 2008 with a mission to provide young women their first experience, stepping into the world of beauty. We wanted to bridge the gap between high-quality beauty & inexpensiveness.

NOT YOUR TYPICAL BEAUTY BRAND

We believe in absolute transparency while delivering our products. Hilary Rhoda is committed to incorporating honesty every step of the way. We deeply understand the beauty aspirations of Indian girls and aim to be educative, friendly and one true ally a young girl can count on as she embarks on her makeup journey. We're here to help you navigate the colourful world of makeup with ease. Whether it's finding the perfect shade for your complexion or learning how to highlight your features, we have got you covered!

WE VALUE YOUR FEEDBACK

At Hilary Rhoda, we cherish you as the heart of our mission. Our products are meticulously crafted through extensive research and development, ensuring they embody quality and skin-friendly goodness. But it's your voice that truly matters. We listen, learn, and evolve, fine-tuning our formulations to deliver the best to you. You're not just a customer; you're an essential part of our journey.

OUR MISSION

To create an exclusive makeup brand that empowers individuals of all ages, backgrounds and skin tones through a diverse range of high-quality cosmetics. There are many challenges that women must overcome in order to succeed in life. She is in her cocoon, preparing herself to emerge as a butterfly. The O in Hilary Rhoda represents the cocoon of our young women. We nurture the caterpillar to burst through the cocoon and become the confident butterfly that conquers the world.

OUR FUTURE

Our motivation extends beyond profits — money takes a back seat & confidence takes centre stage. At Hilary Rhoda, beauty isn't about price tags; it's about feeling unstoppable! With every new creation, we set the bar higher, ensuring that each product fills a unique niche in the beauty industry.

A decorative border consisting of a grid of white rounded rectangles on a purple background. The rectangles are arranged in a staggered pattern, with each row offset from the one above and below it. The word "FACE" is centered within this grid.

FACE



**BEST
SELLER**



HIGH DEFINITION PRIMER

HR - P03

Even Base: Blurs pores & bumps & evens out skin texture.

Matte Finish: Creates a mattifying effect on the skin.

Silicone-Based: Helps makeup to glide smoothly and last longer.



PREPPING UP PRIMER WITH VITAMIN C

HR-P08

Citrus-Infused Beauty Boost: Infused with the goodness of Vitamin C.

Oil-Free Formula: This primer is water-based.

Minimises Pores: Reduces the appearance of pores & bumps.



**BEST
SELLER**



POWER OF BLUR PRIMER

HR-P07

Hydrating Formula: Infused with Vitamin A & E & blurs pores & bumps.

Protective Barrier: Silicon-based formula which creates a barrier between skin & makeup.

Matte Finish: Creates a mattifying effect on the skin.

TRENDING



HERE TO BLUR PRIMER

HR - P11

Minimises Pores: Blurs imperfections for a smooth, camera-ready look.

Tinted Perfection: Provides a subtle tint for an even skin tone & has a matte finish.

Effortless Application: Cream-based formula glides on smoothly.



3-IN-1 PRIMER SPRAY

HR - P20

3-in-1 Primer: Acts as a primer, setting spray, and skin refresher.

Locks Makeup in Place: Prevents smudging and fading for long-lasting wear.

Minimises Pores: Refreshes skin & creates a smoother, more flawless look.



SMOOTHBLUR PRIMER SERUM

HR-P12

Moisture-Locking Primer Serum: Hydrates skin for a dewy base and smooth makeup.

Pore-Blurring Formula: Minimises pores for a flawless, airbrushed effect.

Lightweight & Nourishing Primer Serum: Feels light, improves skin with Niacinamide.

----- SHADES -----



BLUEBERRY BURST



Rose Petal

**BEST
SELLER**

CONCEALING & CONTOURING PALETTE

HR - 450

Conceals & Corrects: Hides imperfections and neutralises discolouration.

Buildable Coverage: Customises coverage for a flawless look.

Hides Dark Spots: Effectively covers dark spots, hyperpigmentation, and age spots.

----- SHADES -----



01

02

03



**BEST
SELLER**

LIQUID CONCEALER

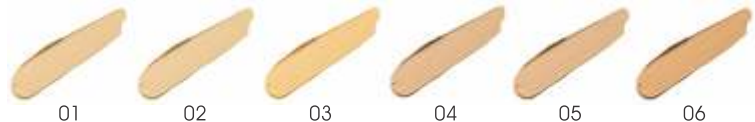
HR - 1414

Creaseless Coverage: Lightweight formula with buildable coverage.

Hides Imperfections: Conceals dark circles, blemishes, and uneven skin tones.

Buildable Coverage: Adjusts coverage for customised results.

----- SHADES -----



01

02

03

04

05

06



TRENDING

HIDE IT ALL COVER CONCEAL

HR - 1480

Full Coverage: Provides high coverage without feeling heavy or greasy.

Conceals All Imperfections: Hides dark circles, blemishes, and scars.

Infused with Shea Butter: Nourishes and moisturises the skin.

SHADES



**BEST
SELLER**



RADIANT BB FOUNDATION

HR-8674

Ultra-Creamy Formula: Glides smoothly onto the skin for a comfortable feel.

Buildable Coverage: This has good coverage for daily use.

Dewy Finish: Provides a luminous and healthy glow.

----- SHADES -----



01
White Island

02
Beige

03
Ivory

04
Natural

05
Soft Beige

06
Natural Beige



**BEST
SELLER**



BB DAILY WEAR CREAM SPF 15

HR-5074

Sun Protection: Provides SPF 15 protection against harmful UV rays.

Nourished Skin: Infused with Wheat Germ Oil, Jojoba Seed Oil & Macadamia Ternifolia Oil.

Dewy Finish: Achieves a healthy, youthful glow with a radiant finish.

----- SHADES -----



01
SHELL
WHITE

02
FAIR
IVORY

03
NUDE
BEIGE

04
GOLDEN
BEIGE

05
CARAMEL
BEIGE

06
WARM
SUN

SUPER COVER FOUNDATION

HR-5071

Full Coverage: Conceals blemishes, dark spots, and hyperpigmentation.

Lightweight & Breathable: Comfortable all day, every day.

Matte Finish: Controls shine for a refined look.



SHADES



HIGH DEFINITION FOUNDATION

HR - 5555-HD

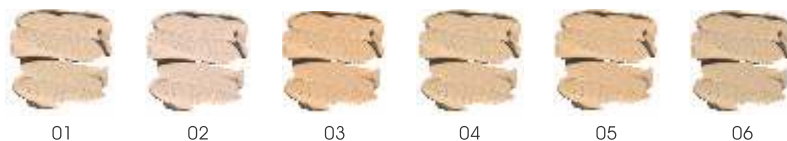
Next-Gen HD Finish: Conceals imperfections with airbrush-like ease.

Matte & Lightweight: Polished look with a comfortable, lightweight feel.

High Coverage: Smooth application that camouflages imperfections.



SHADES



SKIN PERFECTING FOUNDATION

HR-5079

Super Matte Finish: Infused with SPF 15, controls shine for a flawless, all-day look.

High Coverage Perfection: Hides blemishes, dark spots, and pigmentation.

Skin-Perfecting Power: Perfectly mimics your skin while masking imperfections.

SHADES



BASE IT UP FOUNDATION STICK

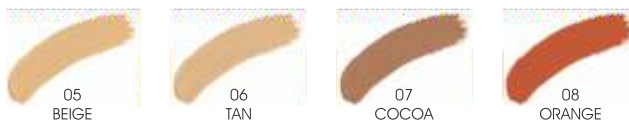
HR-R24

Effortless Blendability: Seamlessly blends for a natural, skin-like finish.

Medium-to-Full Coverage: Hides imperfections with buildable coverage.

Water-Resistant: Your look lasts, rain or shine.

SHADES



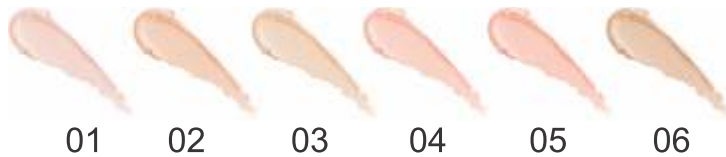
PERFECT SKIN CREAM FOUNDATION

HR-5078

Feels Like a Balm: Comfortable and non-greasy wear.
Buildable Coverage: Customise coverage from medium to full.
Matte Finish: Oil-free and shine-free look.



SHADES



MAGIC JAR COLOUR CHANGING FOUNDATION

HR-5076

Adapts to Skin Tone: Adjusts to your skin tone's pH for a perfect match.
Buildable Coverage: Control the intensity from medium to full.
Satin Finish: Soft finish that balances matte and dewy.



**BEST
SELLER**



SLAY ALL DAY COMPACT

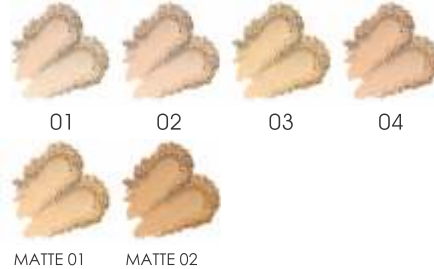
HR - 0804

2-in-1 Versatility: Matte and shimmer finishes for customised looks.

Long-Lasting Wear: Keeps makeup in place from 9 am to 9 pm.

Shine Control: Minimises excess shine for a flawless look.

SHADES



**BEST
SELLER**



BASE IT UP BB COMPACT

HR - 0810

2-in-1 Finish: Matte and shimmery options for versatile looks.

Vitamin E Enriched: Nourishes and protects skin from environmental damage.

SPF Protection: Shields skin from harmful UV rays.

SHADES





**BEST
SELLER**

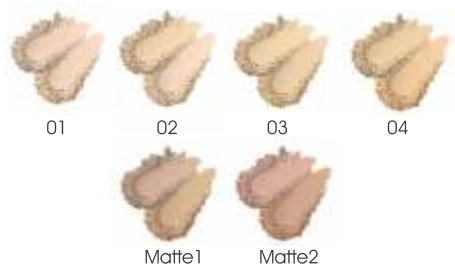


HIGH DEFINITION COMPACT POWDER

HR-0806

- HD Finish:** Light-diffusing technology, minimises pores & imperfections.
- SPF 15:** Built-in sun protection.
- 2-in-1 Versatility:** Matte and shimmer finishes for customised looks.

----- SHADES -----





BB FACE PRESSED POWDER

HR - 6702

2-in-1 Finish: Matte and shimmer for everyday radiance.
Flawless Coverage: Conceals imperfections, uneven skin tone, dark spots, and blemishes.
Weightless Formula: Comfortable, all-day wear.

----- SHADES -----



01 (MATTE) 02 (MATTE) 03 (MATTE) 04 (MATTE) 05 (MATTE) 06 (MATTE)

**BEST
SELLER**



SETTING DUO - COMPACT & LOOSE POWDER

HR - 6704

2-in-1 Design: Combines compact and loose powder for versatile use.
Mattifies Skin: Controls shine and oil buildup.
Weightless Feel: Loose powder sets makeup with a velvety, barely-there sensation.

----- SHADES -----



01 (MATTE) 02 (MATTE) 03 (MATTE) 04 (MATTE) 05 (MATTE) 06 (MATTE)

BAKE OUT LOOSE POWDER

HR-6801

Sets Your Makeup: Sets makeup for a picture-perfect look that lasts.

Weightless Formula: Feels comfortable and light on the skin.

Crease-Proof: Prevents makeup from creasing under pressure.



----- SHADES -----



01- Translucent



02- Banana

GLOW UP COMPACT POWDER

HR-0808

SPF 26+: Provides sun protection.

Matte Finish: Creates a matte, shine-free look.

Sebum Control: Controls excess oil.



**BEST
SELLER**

----- SHADES -----



01



02



03



04





SKIN PERFECTING COMPACT

HR-6707

Matte Finish: Smoothens and mattifies for a flawless complexion.

Buildable Coverage: Customisable coverage from natural to full.

Weightless Formula: Feather-light feel for all-day comfort.

SHADES



01



02



03



04



05



06

**BEST
SELLER**



GET GLOW HIGHLIGHTER PALLETTE

HR-NE421

Shimmer Finish: Provides a subtle, glowing look.

Weightless Feel: Comfortable to wear all day.

All-in-One Palette: Convenient for creating complete looks.

----- SHADES -----



**BEST
SELLER**



BLUSH SQUAD PALETTE

HR-NE425

Luminous Shimmer: Radiant finish for a healthy glow.

Effortless Application: Easy blending, intense colour payoff.

Weightless Comfort: Long-lasting wear without caking.

----- SHADES -----





TRENDING



FLASH GLOW SHINE HIGHLIGHTER

HR - NE439

Highly Pigmented: Stunning glow with minimal product.

3D Particles: Multi-dimensional, diamond-like shine.

All-Day Luminosity: Long-lasting formula for extended wear.

----- SHADES -----



01 Chrome Shine

02 Rose Shine

03 Diamond Shine

04 Gold Shine



NEW
ARRIVAL



SKIN SHINE STROBE CREAM

HR - 5083

Hydrates & Glows: Infused with shea butter and hyaluronic acid for a dewy, nourished look.

2-in-1 Wonder: Acts as both a moisturiser and a highlighter for instant radiance.

Feather-Light Feel: Super lightweight and non-sticky for comfortable, all-day wear.

----- SHADES -----



01 Sterling Silver



02 Pink
Champagne

ULTRA GLOW LIQUID HIGHLIGHTER

HR - NE438



Liquid Glow: Effortlessly melts into skin for a natural-looking shine.

Refined Shimmer: Subtle sparkle for a touch of glamour without chunky glitter.

Lightweight & Blendable: Smooth, comfortable application with buildable coverage.

SHADES



01
Ultra
Pearl

02
Ultra
Pale Gold

03
Ultra
Champagne

04
Ultra
Copper

TRENDING



BLUSH RUSH

HR - NE433

High Pigmentation: Vibrant colour with minimal product.

Silky Matte Finish: Effortless application with a matte finish.

Long-lasting Wear: All-day colour, no touch-ups.

SHADES



1 Peach Lilly

2 Cherry blossom

3 Coral tulip

4 Tube rose

5 Orchid love

6 Poppy flower



**BEST
SELLER**



QUICK CREAM BLUSH

HR - NE435

Primer-Infused: Ensures a dewy flush that stays vibrant all day.

Cream-Based Formula: Delivers a dewy finish while keeping skin hydrated.

Buildable Coverage: Blendable and lightweight for a radiant, soft-focus look.

----- SHADES -----



01
Peach
Blossom

02
Mellow
Coral

03
Mauve
Madness

04
Perfect
Pink

05
Red
Alert

06
Pink
Passion



BLUSH LOVE

HR - NE436

Liquid Formula: Gives skin a dewy glow, build it up for more colour.

Blends Easily: Special applicator makes it simple to apply.

Dewy Finish: Works on all skin types for a fresh, dewy look.

SHADES



01 | Showbizz

02 | Drama

03 | Spotlight



04 | Gossip Girl

05 | Serial Chiller

06 | Scandalous

TRENDING

STAYING UP MAKEUP FIXER

HR-MF01

Long-Lasting Formula: Locks your makeup in place for hours.

Matte, Hydrated Skin: Controls oil, has a matte finish & keeps skin hydrated.

Light, Refreshing Mist: Feels light and comfortable on all skin types.



QUICK FIX MAKEUP SETTING SPRAY

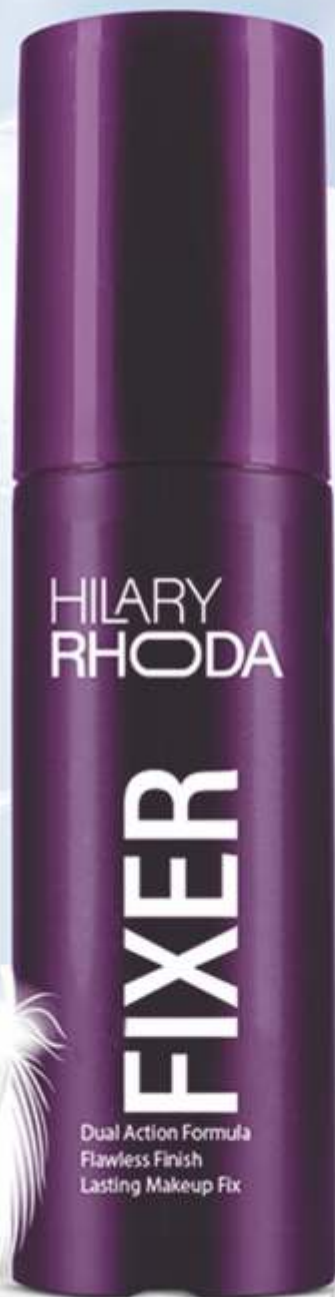
HR-MF02

Soothes & Protects: Vitamin E comforts skin while locking in your makeup.

Luminous All-Day Wear: Keeps your makeup looking fresh and radiant for hours.

Healthy Glow: Controls shine while adding a subtle, luminous glow.





ULTIMATE MAKEUP FIXER

HR-MF52

Hydrates & Sets: Keeps skin moist and makeup lasting all day.

Nourishing Formula: Infused with Niacinamide and Hyaluronic Acid, it nourishes your skin.

Dual-Action Fix: Fresh look and locked-in makeup, all in one spray.

TRENDING



SHIMMER STAY MAKEUP FIXER

HR-MF53

Shimmer & Set: Locks makeup for 16 hours, with a radiant, shimmer finish.

Aloe Vera Comfort: Soothes and hydrates skin, keeping it fresh all day.

Light & Long-Lasting: Non-greasy, weightless formula that prevents smudging and fading.

QUICK SWIPE BI PHASED MAKEUP REMOVER

HR-MR70



Quick & Easy Removal: Gently removes waterproof makeup, dirt, and pollution in a few swipes.

Skin-Loving Ingredients: Aloe Vera, Vitamin E, and Witch Hazel leave skin fresh and hydrated.

Bi-Phase Clean: Oil lifts makeup, water refreshes, with no sticky feel.



GLOW UP FACE PALETTE

HR - 1220

8 Radiant Shades: Highly pigmented highlighters for a show-stopping glow.

Smooth, Weightless Blend: Superfine particles for flawless application, no fall-out.

Perfect for Indian Skin: Shades are designed to complement all Indian skin tones.

- 9 Eye Shadows
- 1 Blusher
- 1 Highlighter

SHADES



01

02

03

04



TRENDING



TRANSFORM FACE PALETTE

HR-K040

Complete Face Palette: Eyes, cheeks, contour — ready for any adventure.

High-Impact Colour: Effortless blend, all-day flawless finish.

Endless Looks: From subtle to sultry, your go-to beauty kit.

----- SHADES -----



01-SOFT GLAM



02-LITTLE DRAMA

LETS FACE IT FACE PALETTE

HR-1251

Blush, Contour & 9 Eyeshadows: Your all-in-one palette for effortless glamour.

Intense Colour: Bold colour, seamless blend, zero fallout — Long-lasting perfection for all skin.

Day-to-Night Versatility: Create endless matte & shimmer looks on the go.



----- SHADES -----



1-DAY SPRING



2-SUN DOWNER

FLAWLESS FOREVER FACE PALETTE

HR - 1253

All-in-one Face Palette: Eyes, cheeks, and contour, all in one handy palette.

Highly Pigmented: Rich colours that last from morning to night.

Travel-Friendly: Easy to carry for quick touch-ups anywhere.



----- SHADES -----



01



02



03

MORE THAN BASIC FACE PALETTE

HR-1250

Complete Face Palette: Eyeshadows, blush, contour, and highlighter for a full makeup look.

Rich Colour, Lasting Finishes: High-pigment matte and shimmer shades that blend seamlessly.

All-in-One Beauty: Everything needed for day-to-night looks, in one travel-friendly palette.



-----SHADES-----



01



02



03



04

THE MULTI-TASKER KIT

HR - NE690

40 Eyeshadows: Endless pro looks.

Complete Face & Lip Shades: 1 Face Powder, 1 Highlighter, 2 Blushes & 8 Lip Shades.

Highly Pigmented: Crafted with rich pigments.

-----SHADES-----



01



02



THE BOOK OF MAKEUP

HR - 1248

Complete Collection: 20 Eyeshadows, 2 highlighters, 2 blushes & contours & 6 lip glosses.

Effortless Blend: Superfine formula for vibrant, all-day wear on any skin.

Portable Beauty Book: Travel-ready design for glam anytime, anywhere.



-----SHADES-----



01



02

THE COLLECTIVE FACE PALETTE

HR - 1240

The Ultimate Makeup Collection: 24 Eyeshadows, 3 eyebrow powders, 1 highlighter, 1 blush & 1 contour, 3 lip glosses.

All-Day Comfort: Long-lasting formula blends seamlessly without caking or creasing.

Beauty On-the-Go: Highly pigmented shades deliver maximum impact in a travel-friendly design.

-----SHADES-----



01



02



BEST
SELLER

**BEST
SELLER**



PROFESSIONAL MAKEUP KIT

HR - NE888

Your Complete Palette: 1 Face Powder, 3 Cream Concealers, 3 Blushes, 6 Lip Colours, 40 Eyeshadows.
Effortless Day-to-Night Glam: Versatile colours for eyes, cheeks, lips & face.
Crafted for Creativity: Empower your beauty with one essential kit.

----- SHADES -----



01



02

**BEST
SELLER**



EVER MINE LIQUID SINDOOR

HR-LS21

Highly Pigmented: Rich, long-lasting colour that stays all day.
Effortless Precision: Easy to apply with a precise, no-mess tip.
Smudge-Proof Formula: Vibrant, smudge-proof traditional touch for any occasion.

----- SHADES -----



01
RED



NEW
ARRIVAL



SAUBHAGYA LIQUID SINDOOR

HR-LS22

Gentle & Lasting: It's soft on your skin and stays put all day.

Vibrant & Waterproof: Get bright, natural colour that won't smudge or run.

Effortless & Safe: Super easy to put on and kind to your skin.

SHADES



01 Red



02 Maroon

WET WIPES

HR - X1

Pocket-Sized Package: Perfect on-the-go for quick clean-ups.

Moisture Lock-in: Special pack keeps wipes damp for every use.

Soft & Gentle Clean: Feels good on your skin, leaves you feeling fresh.

**BEST
SELLER**



VARIANTS



LEMON



LAVENDER



JASMINE



ROSE

ONE SWIPE MAKEUP REMOVER WIPES

HR-X2

Quick & Easy Clean: Removes waterproof makeup in just one swipe.

Kind to Your Skin: Contains Aloe Vera to keep skin soft and calm.

Travel-Friendly Essential: Easy to carry and won't spill in your bag.



The image features a solid purple background. A grid of white, rounded rectangular shapes is arranged in five rows. The word "EYES" is centered in the middle row, written in a white, bold, sans-serif font. The grid is composed of 10 columns and 5 rows of these rounded rectangles, with the word "EYES" occupying the space of the 4th and 5th rectangles in the 3rd row.

EYES





**BEST
SELLER**

EYEBROW DRAWING

HR - EBP01

Versatile 3-in-1 Palette: Creates fuller, natural-looking brows with superfine, blendable particles.

Precision Application: Includes an angled brush for defining & a spoolie for blending.

Easy to Use: Designed for effortless application and a naturally enhanced brow look.



**BEST
SELLER**

BROW ARTIST EYEBROW PENCIL

HR-H08

Dual-Ended: Features a spoolie for blending and a slanted tip for hair-like strokes.

Highly Pigmented & Smudge-Proof: Delivers rich, consistent colour that lasts all day without smudging.

All-in-One Brow Solution: Perfect for defining, filling, and shaping brows flawlessly.





**NEW
ARRIVAL**



ARCH DEFINING EYEBROW PENCIL

HR-H025

Natural, Lasting Arch: Get perfectly shaped brows that stay all day!

Smudge-Proof Magic: No smudges, just flawless, long-lasting wear.

Built-in Spoolie: Easy blending and grooming for a polished look.

----- SHADES -----



BLACK



BROWN



EYE DEFINER PENCIL

HR-025

Long-Lasting Colour: Creamy formula with an intense pigmentation in a single swipe, AM to PM.

Versatile: Ideal for creating diverse eye styles, from subtle to bold.

Smooth & Easy Application: Glides on effortlessly for quick and impactful definition.

----- SHADES -----

01

Fairy White

02

Matte Mocha

03

Sassy Green

04

Iconic Blue

05

Under the Sky

06

Roasting Black



**BEST
SELLER**

ULTRA BLACK KAJAL

HR-H01

Intense Matte Ultra-Black: Delivers a bold, infinite black finish for a dramatic look.

Waterproof & Smudge-Proof: Long-lasting formula stays put through any activity.

18-Hour Wear: Ensures all-day impact without the need for touch-ups.

----- SHADES -----



BLACK



NEW
ARRIVAL



ZERO SMUDGE KAJAL

HR-H026

Waterproof Formula: Delivers a vibrant, waterproof, and smudge-proof line that lasts all day.

Gentle on the Eyes: Features Vitamin E and Almond Oil for gentle, nourishing wear.

Activated Charcoal Power: Perfectly defines and lines with intense, rich pigment.

----- SHADES -----



BLACK



SLAY ALL DAY KAJAL

HR-H07

Hyper Black Colour: Creates intensely black eyes that command attention.

Waterproof & Smudge-Proof: Stays put while allowing for smudging as eyeshadow, lining, or kajal.

Long-lasting Formula: Lasts from early mornings to late nights.

----- SHADES -----



Black



SLAY ALL DAY KAJAL

HR-H07P

White & Black Shades: Highly Pigmented formula, comes in black & white colour.

Intense Colour: Crafted to swipe rich colour in one swipe.

Waterproof & Smudge-Proof: Stays put while allowing for smudging as eyeshadow, lining, or kajal.

----- SHADES -----



Black



White

DEEP BLACK SKETCH EYELINER

HR-H02

Waterproof & Smudge-Proof: Ensures your eye makeup stays flawless through any condition.

Firm Tip for Precision: Allows for easy creation of both subtle and bold lines.

Long-Lasting Matte Deep Black: Maintains intense colour without fading or smearing in a single stroke.

----- SHADES -----



BLACK



**BEST
SELLER**

EYE-SPY PEN EYELINER

HR-H010

Intense Black for Captivating Looks: Creates striking eye looks with its deep black finish.

Feather-Light & Smooth Glide: Applies effortlessly, leaving sleek, comfortable lines.

Quick-Drying & Long-Lasting: Stays put without smudging from 8 to 5, ideal for daily wear.

----- SHADES -----



02
Blue



03
Green



04
Wine





TRENDING



PERFECTION PEN EYELINER

HR-H024

Smudge-Proof & Waterproof: Enjoy perfect wings all day without the worry of smudging.

Precision Tip: Creates clean lines and sharp wings easily, ideal for beginners & professionals alike.

Single Stroke Application: Achieve intense colour payoff and a defined look with just one application.

----- SHADES -----



01

STROKE IT EYE PENCIL

HR-H015

Ultra-Matte Colour: Delivers luxurious, intense colour with a sophisticated matte finish.

Smudge-Proof Formula: Glides on smoothly for effortless application that stays put.

Defines and Enhances: Expertly shapes your lips for a lasting, impactful outline.

----- SHADES -----



TRENDING



With
Sharpener

HI-TECH EYELINER

HR - 8097

Rich Deep Black Pigment: Creates a bold and impactful eye definition.

Precision Tip for Creative Looks: Allows for detailed and imaginative eye designs.

Quick-Drying & Water-Resistant: Stays stunning from morning to night with a mattifying finish.

----- SHADES -----



01

BEST
SELLER





TRENDING

HILARYRHODA



PLAY N BLEND GEL EYELINER

HR-H014

Dual Matte & Shimmer Finishes: Offers versatility to switch between different eye looks.

2-in-1 Smudger: Allows for easy blending and creating smokey effects.

Smudge-Proof Formula: Ensures your eye makeup stays flawless.





EYE CALLIN LIQUID EYELINER

HR-H016

12-Hour Stay: Designed for long wear, resisting smudging and fading.

Eye-Catching Intensity: Delivers a bold look for subtle or dramatic styles.

Waterproof Formula: Applies flawlessly and withstands rain or shine.

---- SHADES ----



01 MATTE



02 SHINY



NEW
ARRIVAL



COAL BLACK LIQUID EYELINER

HR-H027

Glossy Finish: Get a super dark, shiny line that lasts all day.

Long-Lasting Formula: It's waterproof, won't smudge, and won't crack.

Gentle on the Eyes: Made with activated charcoal and soothing aloe for happy eyes.

----- SHADES -----



BLACK

SHOWSTOPPER GLITTER EYELINER

HR - 9010

Captivating Shimmer Finish: Infused with superfine glitter for a show-stopping, dazzling effect.

Quick-Drying & Smudge-Free: Allows for fast application that stays put all day.

Water-Resistant & Highly Pigmented: Delivers bold, long-lasting glitter impact that's impossible to ignore.

----- SHADES -----



TRENDING



SHOWSTOPPER LIQUID EYESHADOW

HR-LE01

High-Impact Glitter: Gel-based formula delivers multi-dimensional glitter that sets quickly.

One-Swipe Glitter: Easily achieve a bold, glittery eye look with a single application.

Gentle Formula: Formulated for comfortable wear despite its high-impact glitter finish.

----- SHADES -----



**BEST
SELLER**

PERFECTION EYESHADOW PALETTE

HR - K012

Vibrant Colour Payoff: Makes eyelids colourful and striking for any occasion.

Matte, Shimmer & Glitter Finishes: Perfect for soft glam, natural, dramatic, or cut-crease styles.

No-Fallout Formula: Blends flawlessly for a dream-like finish.



----- SHADES -----



01

02

03



COLOUR STAY EYESHADOW PALETTE

HR - K010

Vibrant & Long Lasting Formula: Highly pigmented formula crafted for long-lasting impact.

Zero Fallout: Easy to use for both beginners and professionals.

Matte & Shimmer Finishes: Offers a variety of looks for every occasion or mood.

----- SHADES -----



01

02

SOFT GLAM EYESHADOW PALETTE

HR - K022

18 Versatile Matte & Shimmer Shades: Offers a wide range for effortless, elegant looks.

Minimal Fallout: Each shade blends seamlessly for an all-day look.

One-Swipe Application: Provides quick and easy stunning results.

----- SHADES -----



01



02

**BEST
SELLER**



PLAY N BLEND EYESHADOW PALETTE

HR-K041

18 Iconic Matte & Shimmer Shades: Offers a rich variety of colours and textures for diverse looks.

Superfine Particles: Ensures smooth blending from palette to lid.

Versatile for Expressive Eye Looks: Transforms eyes into a canvas for vibrant storytelling.

----- SHADES -----



01 DAY DREAMER



02 ICONIC





**NEW
ARRIVAL**



MAIN CHARACTER EYESHADOW PALETTE

HR-K042

Bold Colour Pay-Off: Intense pigments for eyes that pop!

Silky, Long-Wear: Smooth mattes and shimmers that last.

Effortless Blending: Blend easily for a brilliant look!

---- SHADES ----



01 Luv in Bold

02 Luv in Nude



20 Color Eyeshadow

HR-8054

20 Vibrant Shades: High-pigment matte & shimmer for any look.

Long-Lasting Impact: Intense colour that stays put all day.

Versatile Finishes: Mix and match matte and shimmer for endless creativity.



DOUBLING MASCARA

HR-1061

Lengthening & Volumising Formula: Provides both length and volume for impactful lashes.

Waterproof, Smudge-Proof: Ensures a flawless look that lasts all day.

Dense Bristles: Designed to coat lashes effectively for both volume and length.



----- SHADES -----



01



VOLUME HIGH MASCARA

HR-8096

Adds Volume: Coats each lash for a dramatically full look.

Waterproof & Smudge-Proof Formula: Stays put through any activity without clumping.

Long-Lasting Formula: Ensures a perfect look that lasts all day.

----- SHADES -----



01



TWIN TWISTER MASCARA

HR-1063

Dynamic 2-in-1 Mascara: Offers both lengthening and volumising benefits in a single product.

Clump-Free Lashes: Designed to create clump-free lashes with its unique application.

Volumising & Lengthening: Choose between the caps for a volumising or a lengthening effect, or both.

PREP & PRIME TRANSPARENT MASCARA

HR-8181

Multi-Use Formula: Enhances lashes, shapes brows, and acts as a lash primer.

Curl & Definition: Accentuates lashes without clumping, creating a natural, luscious look.

Conditioning Formula: Keeps lashes looking fierce all day, while nourishing and protecting them.



EXTREME LASHES MASCARA

HR-1025

Volumises & Lengthens: Creates dramatic lashes that last through any weather.

Clump-Free Formula: Glides on easily for a comfortable, defined look.

Oversized Brush: Coats each lash for maximum impact, layerable and non-sticky.

---- SHADES ----



01

TRENDING





LIPS





**BEST
SELLER**

NATURAL MOISTURE MAGIC COLOUR

HR - 102

PH Colour Change: Changes to a unique shade based on your lips' natural PH.

Intense Hydration: Deeply hydrates and prevents lips from feeling dry or sore.

Grape Seed Extract: Contains natural grape seed extract for lip nourishment.



PINK MAGIC LIP BALM

HR - LB01

PH Pink Colour: Crafted a produce a unique pink shade according to your lips' PH.

Protective Hydration: Intensely moisturises and shields lips from environmental factors.



HYDRA LIP OIL

HR-LB02

Plant-Powered Nourishment: Nourishes and treats lips with the power of plant-based oils.

Makes Lips Supple: Soothes dryness and enhances lips with a healthy look.

Glossy Lips: Leaves a unique tint of colour with a natural, glossy finish.



MIX

**BEST
SELLER**



JUICY PUNCH LIP OIL

HR-LB05

PH-Activated: This lip oil blends with your natural PH to create a personalised lip look.

Subtle Tint: Enjoy ultimate lip comfort and care with a touch of vibrant, juicy colour.

Glossy Finish: Get a high-shine glossy finish that's essential for your makeup bag.

**BEST
SELLER**

----- SHADES -----

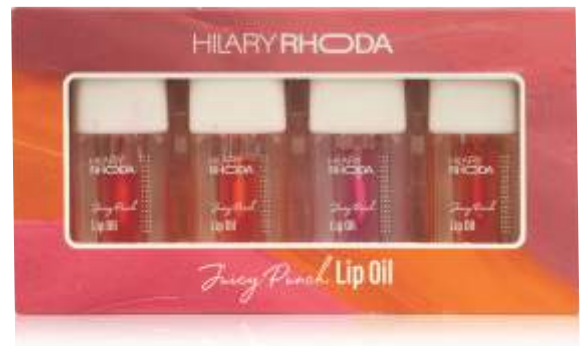


01 Raspberry

02 Orange

03 Strawberry

04 Watermelon



TRENDING



CLEAR & TINT LIP BALM

HR-LB06

Dual-Action Hydration: It has a clear & tinted side.

Aloe Vera & Avocado Infused: Both sides are formulated with Aloe Vera and Avocado.

Travel-Friendly Packaging: Comes in adorable heart-shaped packaging you'll love.



BEST
SELLER



COLOUR SPLASH LIP BALM

HR-LB12

Vitamin E & Cocoa Butter Care: Infused for ultimate lip hydration and nourishment.

Beautiful Tinted Shades: Four lovely shades to match all your vibes.

Hydration with a Pop of Colour: Gives your lips the perfect hydration and a touch of colour.



SECRET LIP LOCK SET

HR-LB81

4 Flavours, Any Occasion: Delicious balms for every mood .

Plump & Hydrated Lips: Keeps your pout soft, moisturised, and ready.

Lip Balm Must-Have: Never be caught without perfect lip care.

----- SHADES -----



HAPPY DREAM LIP TINT

HR-LB82

Juicy, Dreamy Lip Tint: Gives lips a beautiful, subtle wash of colour.

Smooth Glide: Applicator ensures effortless and even application.

Lightweight Feel: Provides a non-sticky, comfortable wear all day.

----- SHADES -----





TRENDING



GLASS GLOW LIP GLOSS

HR-B025

- High-Impact Shine:** Gives lips a noticeable, glossy finish.
- Subtle, Natural Colour:** Offers a sheer wash of soft colour.
- Lightweight & Versatile Wear:** Comfortable solo or over matte lipstick.

----- SHADES -----





NEW
ARRIVAL



Quench Me Lip Gloss

HR-B027

Glossy Finish: Get a super glossy look and quench dry lips with Vitamin E.

Plump & Pretty: It helps your lips look fuller and healthier with a touch of colour.

Non-Sticky Formula: Enjoy a perfect glass-like shine without any stickiness.

SHADES

Transparent



01

Nothing

02

Candy Sparkle

03

Pink Fairy

04

Class Topper

05

Bare

06

Cotton Candy

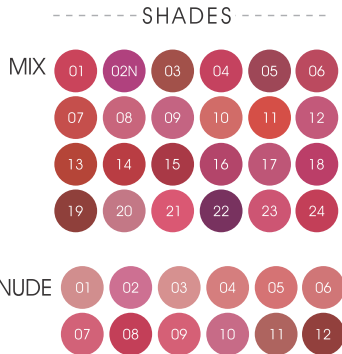
07

Coco Collin'

08

Red Flag

**BEST
SELLER**



MATTEALICIOUS LIQUID MATTE LIPSTICK

HR - B008

No Transfer: Non-transfer formula ensures colour stays on your lips.

Matte Finish: Provides a matte finish without drying out the lips.

Smudge-Proof Colour: Zero smudging for a flawless look that lasts.



**BEST
SELLER**



NON-TRANSFER LIPGLOSS

HR - B009

Kiss-Proof Finish: Delivers a matte finish that won't transfer.

Bold Pigment: Highly pigmented formula for intense colour payoff.

Non-Drying Comfort: Smudge-proof formula that doesn't feel dry on the lips.



MATT LIPGLOSS

HR-B012

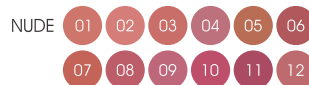
Hydrating Matte Effect: Combines a matte finish with a hydrating feel.

Vibrant, Lasting Colour: Offers rich and long-lasting colour on the lips.

Single Stroke Application: Applies easily to a flawless and even finish.



----- SHADES -----



VELVET MATTE NON TRANSFER LIQUID LIPSTICK

HR-B013

Vitamin E Enriched: Infused with Vitamin E to nourish and care for lips.

Soft Velvet Texture: Glides on smoothly for a comfortable matte finish.

Transfer-Proof: Ensures colour stays on your lips without transferring.

----- SHADES -----



TRENDING



TRAP OF MATTE BULLET MINI LIPSTICK

HR-B030

Nourishing Oils & Butter: Enriched with Vitamin E, Jojoba, Rosehip, Almond, & Cocoa Butter.

12-Hour Stay: Lightweight, smudge-proof, waterproof, non-sticky, no fading.

6 Mini Bullets: Pack of 6 in a perfect mini size.

----- SHADES -----



TRENDING



MATTE MINIS LIPSTICK

HR-2058

Nourishing Oils & Butter: Contains Vitamin E, Jojoba, Rosehip, Almond, & Cocoa Butter.

12-Hour Stay: Lightweight, smudge-proof, waterproof, non-sticky, no fading.

Pack of 6: A Convenient set of mini liquid lipsticks.

----- SHADES -----



MATTE LOVE NON TRANSFER LIQUID LIPSTICK

HR-B020

All-Day Staying Power: Formulated to stay on your lips throughout the day.

Weightless Comfort: Feels light and comfortable once applied.

Long-Lasting Hydration: Keeps lips feeling hydrated for up to 10 hours.

SHADES



MATTE TRAP

HR - B022

Lightweight Feel: Feels comfortable and light on the lips.

Waterproof and Transfer-Proof: Stays put even with moisture and won't transfer.

Skin-Safe Matte Finish: Specially designed for sensitive skin with a velvety matte look.

SHADES





POWER OF MATTE LIQUID LIPSTICK

HR - 2051

Matte Finish: Delivers a bold and noticeable matte look.

Smudge and Transfer Proof: Stays put without smudging or transferring.

Comfortable to Wear: Formulated for comfortable wear despite the matte finish.

SHADES





**NEW
ARRIVAL**



TOUCH OF MOUSSE LIQUID LIPSTICK

HR - 2057

Velvet Mousse: Enjoy a delightful, air-light mousse texture that's wonderfully soft.

Matte Finish: Get a sophisticated matte finish that looks effortlessly elegant.

Feather-Light: This formula feels so weightless, you'll barely know it's there!

----- SHADES -----



01 My Forever 02 Little Peachy 03 Pink Casual 04 Warm Mauve



05 Playful Berry 06 Extra Plum 07 Vintage Rust 08 Ruby Pink



09 Exposed Red 10 Wild Wine 11 Maroon Callin' 12 Extra Maroon

**BEST
SELLER**



PINK SUGAR

HR - GL01

PH-Infused Glossy Shade: Reacts with your lips for a unique, glossy pink colour.

Soft and Hydrated Feel: Leaves lips feeling moisturised and soft.

Long-Wearing Shine: Provides intense colour and shine that lasts comfortably.

----- SET OF 3 -----



MIX

**BEST
SELLER**



COLOR GEL LIPSTICK

HR - GL01B

PH-Activated Gloss: Creates a personalised glossy finish based on your lip's PH.

Supple and Moisturised Lips: Keeps lips feeling soft, smooth, and hydrated.

Long-Lasting Colour: Applies smoothly and provides long-lasting, vibrant colour.

----- SHADES -----



DARLING PH BLACK LIPSTICK

HR-2059

PH-Activated Pink: Looks black but transforms into a beautiful pink shade based on your lips' PH.
Long-Lasting Moisture Lock: Formula designed to keep moisture in for all-day comfort.
Trendy Look: Its initial black appearance is sure to make a statement.



LIPSTICK

HR - 403

Wide Shade Selection: Offers a diverse range of colours for all skin tones.
Long-Wearing Matte Colour: Provides pigmented matte colour that lasts.
Weightless Comfort: Feels light and comfortable on the lips despite bold colour.

SHADES

NUDE 01 02 03 04 05 06

RM 01 02 03 04 05 06





MATTE LIPSTICK

HR - A006

Creamy Matte: Smooth texture with a matte finish that stays put.

Versatile Lip Definition: Ideal for both precise lining and full lip colour.

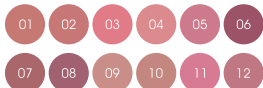
Fun and Colourful Range: Offers a variety of vibrant shades for creative looks.

----- SHADES -----

MIX



NUDE



**BEST
SELLER**



MATTE LIPSTICK

HR - A008

High-Impact Colour: Super-pigmented formula for intense colour payoff.

All-Day Full Coverage: Provides complete lip coverage that lasts.

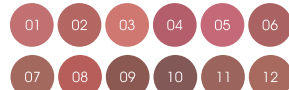
Comfortable Matte Wear: Soft and flexible matte finish for all-day comfort.

----- SHADES -----

MIX



NUDE



MATTE LIPSTICK

HR - A009

Ultra-Lightweight Formula: Feels barely there on the lips.

Non-Drying Matte: A smooth matte finish without feeling dry.

Maximum Colour: Delivers a strong and vibrant burst of colour.



----- SHADES -----

RED 01 07 08 11 17 21

MATTE LIPSTICK

HR - A014

Creamy Velvety Finish: Offers a soft and luxurious feel on the lips.

High-Impact Colour Burst: Delivers a strong and vibrant colour payoff.

Non-Drying: Formulated to stay put without drying the lips.



----- SHADES -----

NUDE

01 02 03 04 05 06



**NEW
ARRIVAL**



TRULY MATTE LIPSTICK

HR-A018

Dreamy Smooth Application: Glides on like a cloud for pure, creamy bliss.

Velvety Matte Finish: Delivers rich colour without any cracking.

Weightless Comfort: So light, you'll forget you're wearing it – but others won't

SHADES

MIX	01	02	03	04	05	06	07	08	09	10
	11	12	13	14	15	16	17	18	19	20
	21	22	23	24						
NUDE	01	02	03	04	05	06	07	08	09	10
	11	12								



**NEW
ARRIVAL**



ULTRA MATTE LIPSTICK

HR-A019

Comfortable Colour: Enjoy vibrant shades that feel light as air on your lips.

Effortless Glide: Smooth formula applies easily for a perfect finish every time.

Brightening Matte: Get a gorgeous matte look that instantly brightens your complexion.

SHADES

MIX



NUDE



THAT'S MATTE

HR - A017

Intense Mattifying Effect: Creates a strong and noticeable matte finish.

Smooth, Velvety Application: Glides on effortlessly for comfortable wear.

Rich, One-Stroke Colour: Delivers vibrant and intense colour in a single application.



SHADES

MIX



NUDE



STARLIGHT METALLIC LIPSTICK

HR-2063

Dazzling Metallic Finish: Get a truly captivating metallic look that makes your lips shine beautifully!

Comfortable Feel: This lipstick feels wonderfully smooth and comfy, so you can wear it all day long.

Lasting Wear: Enjoy a gorgeous metallic finish that stays vibrant and fresh for hours!

SHADES



NEW
ARRIVAL





CREAMY TOUCH LIPSTICK

HR-2056

Luxurious Creamy Comfort: Enriched with nourishing oils and butters for soft lips.

Softens and Plumps Lips: Helps to smooth and slightly plump the lip texture.

Long-Wearing: Provides intense colour that lasts throughout the day.

----- SHADES -----



BEST
SELLER



MATTE ABOUT YOU LIPSTICK

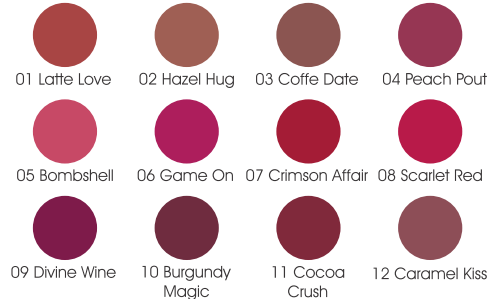
HR-2035

Velvety Smooth Finish: Glides on effortlessly for a comfortable, ultra-matte look.

Non-Drying Matte: Stays put while keeping lips feeling soft and moisturised all day.

Even Colour: Provides smooth application with even colour distribution.

SHADES



MATTE LIPSTICK TRIO

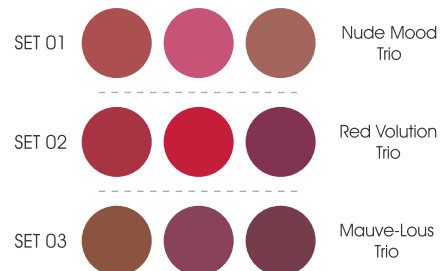
HR-2034

Supreme Staying Power: Offers long-lasting wear with an ultra-matte finish.

Supple & Kissable Lips: Keeps lips feeling comfortable and soft throughout the day.

Highly Pigmented Trio: Pack of 3 vivid colours for striking looks and self-expression.

SHADES





POWER STAY NON TRANSFER LIPSTICK

HR - 2055

Nourishing Formula: Infused with shea butter and vitamins for lip care.

Intense Colour: Provides rich colour with a smooth matte finish.

Waterproof and Lightweight: Stays put and feels light on the lips.

SHADES





**BEST
SELLER**



PRO MATTE NON-TRANSFER MATTE LIPSTICK

HR-2009

12-Hour Non-Transfer: Formula stays on lips for up to 12 hours without transferring.

Smudge and Water Resistant: Resists smudging and stays put even with moisture.

High Pigment, Single Stroke: Delivers vibrant colour with just one application.

SHADES



KISSABLE LIP CRAYONS

HR-2014

Soft, Smooth Lips: Keeps lips feeling supple, soft, and smooth.

12-Hour Stay: Long-lasting formula that stays put from morning to night.

Transfer and Smudge Proof: Won't transfer or smudge for a flawless look.



SHADES



SLAY ALL DAY MATTE LIPSTICK

HR-2062

Transfer-Proof & Smudge-Proof: Stays are put on all day, so there is no need for touch-ups.

One-Stroke Wonder: Highly pigmented for intense colour in a single swipe.

Buttery Smooth: Glides on smoothly and comfortably.



SHADES





**NEW
ARRIVAL**



Match Maker Lip Palette

HR-LP01

Long-Lasting & Mixable: Enjoy 10 hours of waterproof, vibrant colour you can mix and match.

Lightweight & Portable: Feels weightless on your lips and is tiny enough to carry everywhere.

Nourishing Formula: Keeps your lips lush with Vitamin E and Shea Butter.

----- SHADES -----



01
Mood
Changer

02
Game
Changer



LIP PENCIL

HR-022

Creamy Precision: Smooth texture allows for effortless lip outlining or complete filling.

Versatile Shade Range: Available in a wide selection of colours to match various lipsticks.

Lipstick Compatibility: Designed to work seamlessly with many different lipstick shades.

SHADES



BLOOM MOUSSE LIP & CHEEK TINT

HR-LB85

Dual-Use: Perfect for adding a vibrant flush to both lips and cheeks.

Long-Lasting Matte: Mousse-kissed texture that's waterproof and transfer-proof for 12-hour wear.

Blendable & Buildable: Easily blend and build the colour intensity to your liking.





LIP DEFINER LIP LINER

HR - 2032

Ultra-Matte Colour: Delivers luxurious, intense colour with a sophisticated matte finish.

Smudge-Proof Formula: Glides on smoothly for effortless application that stays put.

Defines and Enhances: Expertly shapes your lips for a lasting, impactful outline.

----- SHADES -----





NAILS



SHINE NAIL POLISH

HR-1015

Super Shiny Finish: Gives your nails a really glossy, almost mirror-like shine.

Stays Chip-Free for Weeks: Long-lasting formula that won't easily chip.

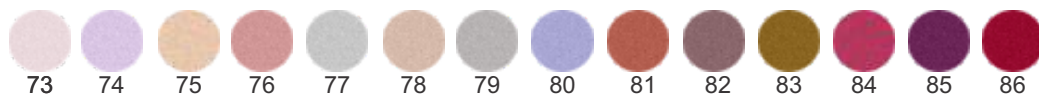
Single Swipe Application: Just one coat is usually enough, and it dries quickly.



SHADES



METALLIC SHADES



**BEST
SELLER**



SHINE POP ENAMEL

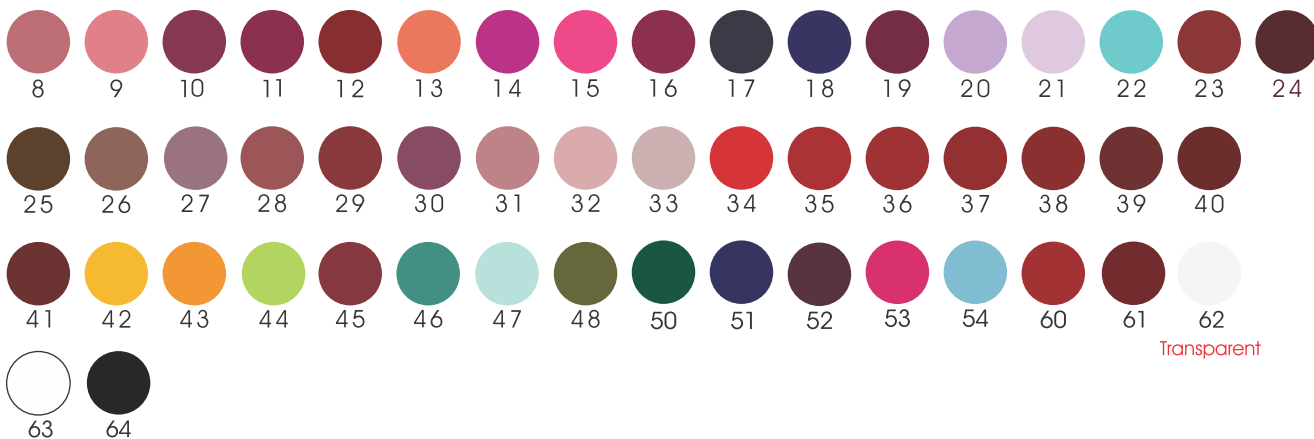
HR - N02

Bright, Shiny Colours: Gel-based polish with really vibrant and glossy shades.

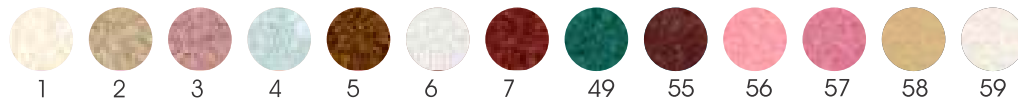
Chip-Free Formula: Trendy colours that stay looking good.

Dries Instantly: Easy to apply and dries super fast.

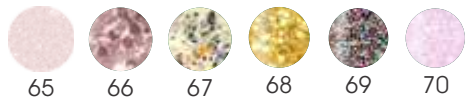
SHADES



**Metallic
Shades**



**Glitter
Shades**





ONE SWIPE NAIL POLISH REMOVER PAD

HR - 5001

Acetone-Free: Easily removes polish without unpleasant smells.

Perfect for Travel: Portable for quick colour changes anywhere.

Cleans All Ten Nails: Each pad is effective for a full manicure.

SHADES





NAIL POLISH REMOVER PADS

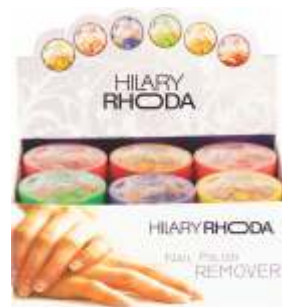
HR-8001

Gentle, Alcohol-Free: Kind to your skin while removing polish.

Removes Polish in One Swipe: Quick and easy to use.

Perfect for Travel: Comes in handy, travel-friendly packaging.

----- FLAVORS -----





HILARY
RHODA
ESSENCE



NEW
ARRIVAL



BEETROOT REVITAL FOR SKIN & HAIR

HR - ES01

Pure Beetroot Glow: Get a natural boost with 100% pure beetroot for radiant skin and hydrated hair.

Skin & Hair Power: Packed with antioxidants and vitamins to keep your skin fresh and hair shiny.

Simple Beauty Mask: Easily mix for a versatile mask that nourishes both your skin and hair.



NEW
ARRIVAL



ROSEMARY HAIR GROWTH SPRAY

HR - ES02

Boost Hair Growth: Rosemary & Biotin visibly boost hair growth and thickness.

Strengthens & Protects: Works to strengthen roots, fights thinning & breakage.

Zero Residue: Enjoy a lightweight, non-oily spray that leaves hair silky.

A decorative border consisting of a grid of white rounded rectangles, arranged in five rows and ten columns, framing the central text. The background is a solid purple color.

SKIN & HAIR CARE





KERATIN HAIR SPA - 500 ML

HR- HT01S

Brings Dull Hair Back to Life: Infuses hair with goodness for a healthier look.

Makes Hair Stronger: Helps prevent breakage and improves bounce.

Smoothens for Shine & Less Frizz: Gives hair a glossy, sleek, and manageable feel.



KERATIN HAIR SPA - 1000 ML

HR - HT01

Brings Dull Hair Back to Life: Infuses hair with goodness for a healthier look.

Makes Hair Stronger: Helps prevent breakage and improves bounce.

Smoothens for Shine & Frizz Free: Gives hair a glossy, sleek, and manageable feel.

BEFORE



NEW
ARRIVAL



HAIR PRO TOUCH-UP

HR - HT02

Instant Hair Perfection: Quickly covers greys, bald spots, and fixes hairlines.

Complete Portable Kit: Includes mirror, puff, and natural shades for easy use anywhere.

Always Look Your Best: Perfect for quick, on-the-go touch-ups.

AFTER



----- SHADES -----



01
Natural Black



02
Deep Brown



**BEST
SELLER**



SUPER HOLD ALL DAY HAIR SPRAY

HR-HS01

Keeps Your Hairstyle All Day: Ultra-strong hold that lasts.

Lightweight Formula: Provides strong hold without feeling sticky or stiff.

Invisible and Sweat-Proof: Goes on clear with no residue, even with sweat.



NEW
ARRIVAL



FRIZZ FIX HAIR SERUM

HR - HS02

Banishes Frizz & Flyaways: Instantly smoothens hair for a sleek, polished look.

Boosts Shine & Detangles: Locks in a glossy finish and makes hair easier to brush.

Lightweight with Nourishing Oils: Feels weightless while deeply hydrating with Jojoba & Argan Oil.

**BEST
SELLER**



DEEP CLEANSE NOSE STRIPS

HR - NPS

Effective Blackhead Removal: Say goodbye to blackheads for a pore-perfect complexion.

Gentle Natural Extracts: Available in calming Rose and detoxifying Charcoal.

Pain-Free Application: Easy to use for a salon-like treatment at home.

----- VARIANTS -----



CHARCOAL



ROSE



TEA TREE



Honey

**BEST
SELLER**



ONE GO FACIAL WAX STRIPS

HR - LWX

Gentle on Face, Tough on Hair: Removes hair from the root without irritating your skin.

Cool Gel Formula: Prevents burns for a comfortable experience.

Natural Extracts, Irritant-Free: Available in Lavender, Chamomile, and Avocado Oil.

----- VARIANTS -----



LAVENDER



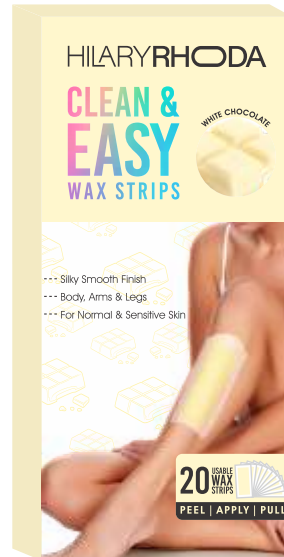
AVOCADO OIL



CHAMOMILE



**NEW
ARRIVAL**



CLEAN & EASY WAX STRIPS

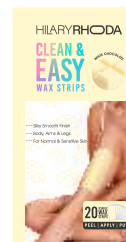
HR-WS02

Effortless & Quick: Get smooth skin instantly at the comfort of your home.

Soothes & Hydrates: Infused with Argan Oil and skin-soothing ingredients like Cocoa Butter & Aloe Vera.

Salon Smooth, Zero Fuss: Achieve beautiful results comfortably, every time!

----- SHADES -----



WHITE CHOCOLATE



ALOEVERA

NEW
ARRIVAL



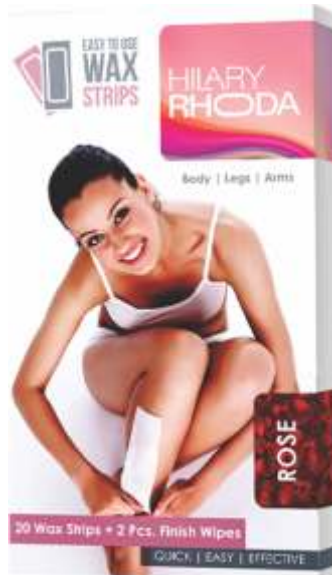
CLEAR SKIN PIMPLE PATCH

HR - SK02

Fights Pimples Fast: Helps get rid of blemishes quickly for clearer skin.

Invisible & Soothing: Blends in on your skin and feels gentle.

Protects & Heals: Covers the pimple to absorb impurities and speed up healing.



EASY TO USE WAX STRIPS

HR - WS

Travel-Friendly Hair Removal: Convenient for on-the-go use.

No Heating Required: Simply rub to warm, avoiding mess and burns.

Pain-Free Formula with Enhanced Grip: Made with natural extracts for comfortable hair removal.

----- VARIANTS -----



ROSE



CHARCOAL



NEW
ARRIVAL



FACIAL SHEET MASK

HR-SK01

Intense Hydration: Deeply hydrates for soft, glowing skin.

Deep Cleansing: Detoxifies and clears pores for a fresh face.

Brightening Formula: Brightens skin and gently buffs away dullness.

----- SHADES -----





NEW
ARRIVAL



NO TRACE SUNSCREEN

HR - SK03

Broad Spectrum Protection: Get SPF 50+ PA+++ defence against UVA & UVB rays. No white cast!
Adds Glow: Experience a non-greasy, dewy glow.
Prevents Tan: Keep your skin bright; boost your natural glow.

FACE & BODY CLEANSING SCRUB GEL

HR - FB01

Gently Exfoliates Impurities: Removes dirt, oil, and dead skin cells.

Leaves Skin Soft & Velvety: Unveils clean and smooth skin.

Travel-Friendly Size: Perfect for maintaining refreshed skin anywhere.

VARIANTS

LEMON | BLUEBERRY | STRAWBERRY | PAPAYA |
RICE | AVOCADO



FACE SERUM

HR-P15

Targeted Age-Defying Solutions: Dandelion & Argan Oil for timeless beauty.

Brightens & Reduces Imperfections: Rosehip Radiance for glow and scar fading.

Boosts Collagen & Hydration: Vitamin C & E for smoother, firmer skin.

Combats Acne & Soothes: Tea Tree & Mulberry for clearer skin.

VARIANTS



**BEST
SELLER**







TOOLS

ONE TOUCH BRUSH

HR - 390

All-in-One Makeup Master: Works with powders, creams, and liquids.

Easy-Grip Design for Precision: Ensures controlled application.

Pro-Level Blending, Zero Waste: Blends seamlessly with minimal product absorption.



PLAY N BLEND BRUSH SET

HR - BR20

Versatile Set for All Formulas: Works with creams, liquids, and powders.

Includes Dual Eyeshadow, Blush, Lip Brush & Blender: Everything for a flawless look.

Smart Bristles for Streak-Free Finish: Ensures smooth and even application.



NEW
ARRIVAL



All-Rounder 4 in 1 Brush

HR - BR21

All-in-One Wonder: Get four essential brushes— Foundation Brush, Powder & Blending Brush, Eyeshadow Applicator, and Contour Brush—all in one sleek tool, perfect for travel!

Saves Your Makeup: It's a non-absorbing material that ensures all your product goes onto your skin, not into the brush.

Flawless Finish: Enjoy soft bristles that blend beautifully for a smooth, perfect look every time.



MAKEUP BRUSH

HR-BR01

Set of 8 Great Brushes: All the essential brushes you need.

Minimum Absorption Bristles: Ensures streak-free finish and less product waste.

Ergonomic Wand for Perfect Grip: Comfortable and easy to control.



BLENDER PUFF

HR-F14

Flawless Blending for All Formulas: Perfect for cream, liquid, and powder products.

Targeted Application: Narrow tip for eyes/nose, broad base for larger areas.

Streak-Free Finish: Smooth material ensures even blending

SHAPES



01 Cut



02 Egg



03 Pear

SHARPNER

HR - SHARPNER

High-Quality for Perfect Points: Designed to give your pencils a sharp, precise tip.

Carefully Crafted: Made with attention to detail for reliable use.

Flawless Application Ready: Ensures your pencils are always ready for perfect makeup application.



----- COLOURS AVAILABLE -----



01

02

03

04





www.hilaryrhoda.in | August 2025